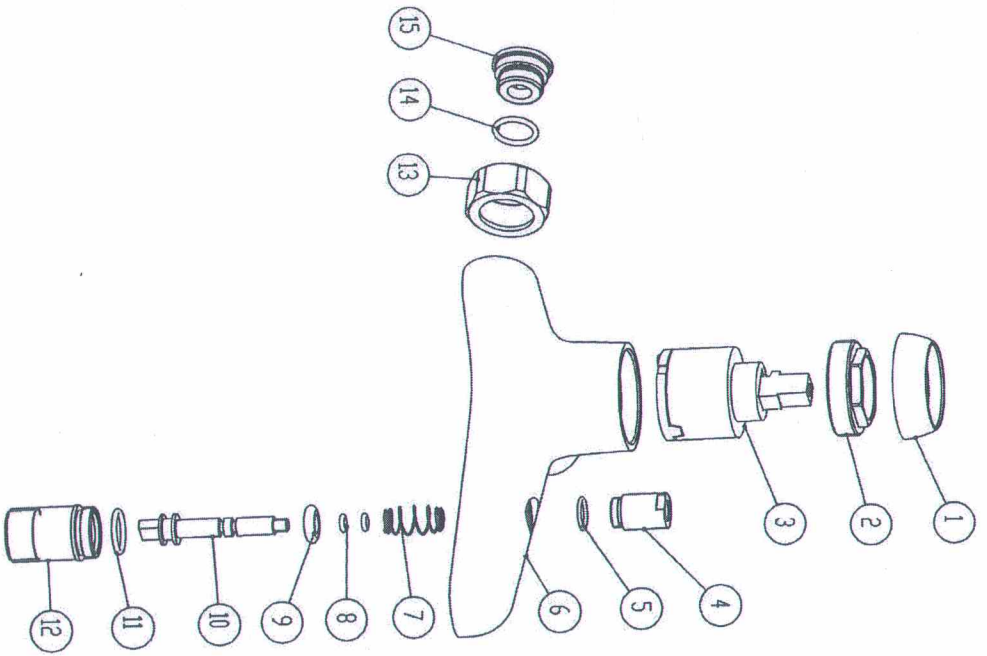


EDA



	Approved	Date	Signature
Novaservis	Ce jpek F.	15.1.2023	<i>Cejpek</i>
Supplier		23.06.20	马守章

受控章

NO.	PART NO	CODE	PART NAME	Model	QTY	Material
15		2510022	Seat		2	SUS304
14		2550021	O-ring	Ø14*2	2	NBR
13		2510016	Sleeve nut		2	57-3
12	92020-04	2630026	Lower part of Diverter		1	57-3
11		2550135	O-ring	Ø16*1.9	1	NBR
10	92020-03	2640092	Diverter Rod	M5	1	57-3
9		2050100	Seal		1	NBR
8		2550023	O-ring	Ø3.5X1.8	2	NBR
7		2080016	Spring		1	SUS304
6	92024-01	2120119	Body	Ø9X1.5	1	CC757S*
5		2550111	O-ring		1	NBR
4	92020-02	2620026	Diverter Sleeve		1	57-3
3		2710002	VH cartridge		1	35D-2
2	92000-02	2020092	CA Nut		1	57-3
1	92000-03	2020041	Cover		1	ABS

Tolerances for linear and diameter dimensions without individual tolerances indication ISO 2768-m Tolerances for radius and chamfer without individual tolerance indication: ISO 2768-m		Drawn: 23.12.2023 Date: _____ Checked: _____ Part No: _____		Weight: 790 Surface: 467 Kos 37: 005204930000	
THE NOVASERVIS BATH MIXER		No 304/		Scale: 1:1	
92 024-00		Model:		Page 1 of 1	
Rev: A3		Date:		Rev:	

