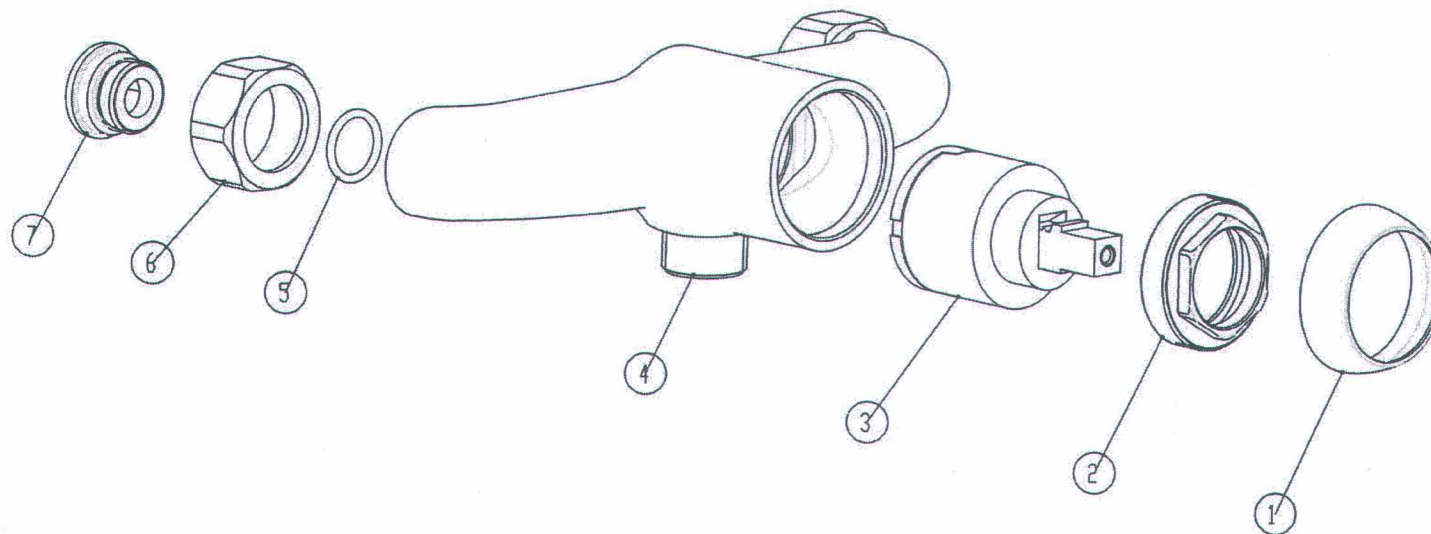


ED:A

	Approved	Date	Signature
Novaservis	Cejpek F.	15.7.2023	<i>Cejpek</i>
Supplier		23.07.23	马守章



受控章

NO.	PART.NO	CODE	PART NAME	Model	QTY	Material
7		2510022	Seat		2	SUS304
6		2510016	Sleeve nut		2	57-3
5		2550021	O-ring	Ø14*2	2	NBR
4	92061-01	2130073	Body		1	CC757S*
3		2710002	WH cartridge		1	35D-2
2	92000-02	2020092	CA Nut		1	57-3
1	92000-03	2020041	Cover		1	ABS

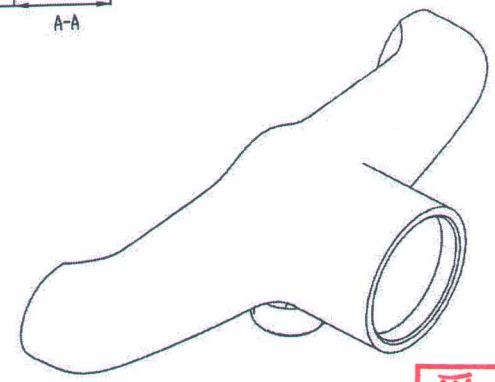
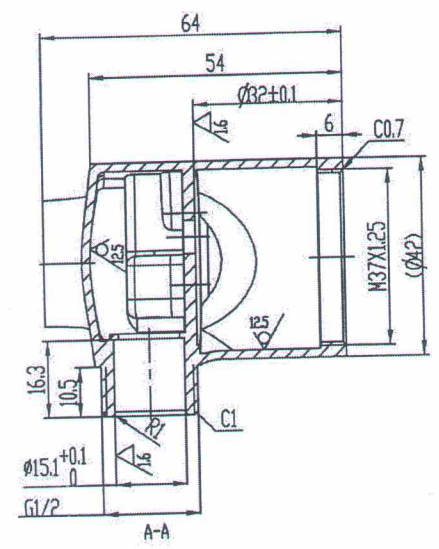
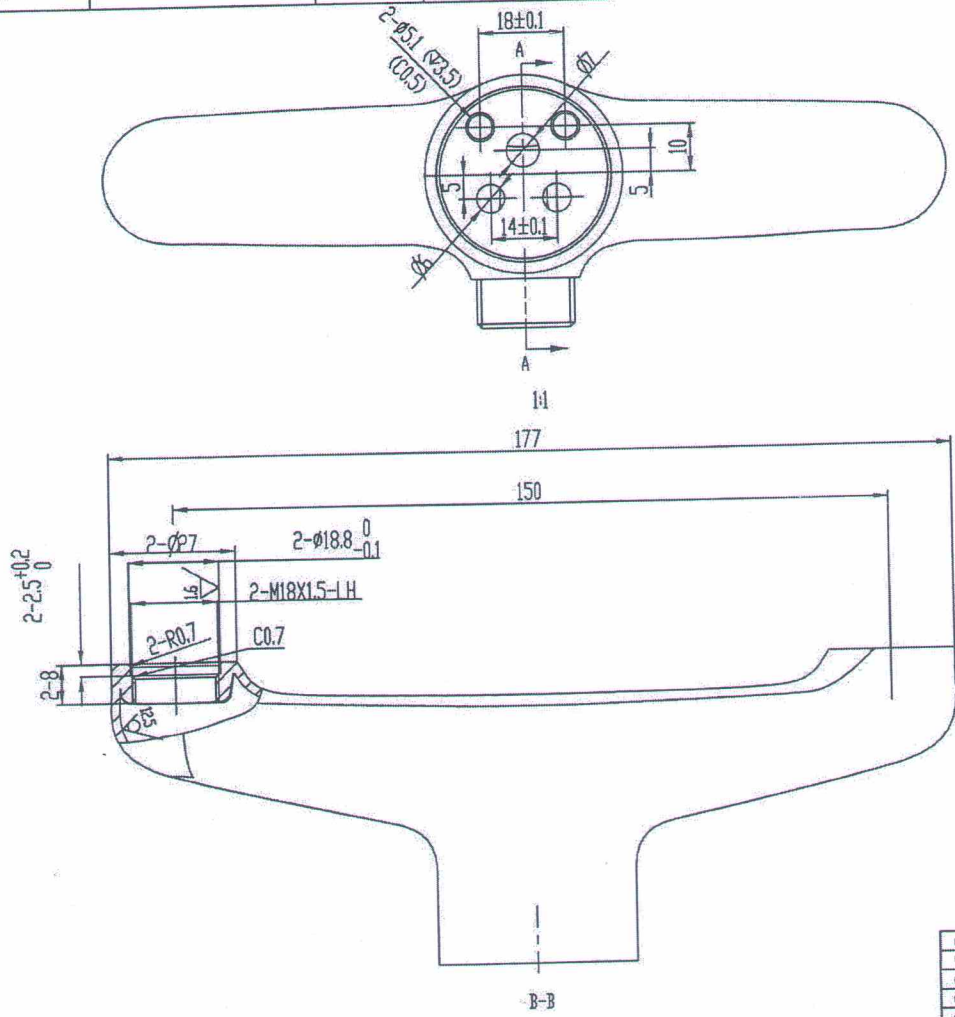
08				Tolerances for linear and diameter dimensions without individual tolerance indications: ISO 2768-m		novaservis
07				Tolerances for radius and chamfer without individual tolerance indications: ISO 2768-n		
06				Title		SHOWER MIXER
05				Date	None	
04				Draw	7.3.2023	Chen Bo
03				Materials		No IRV
02						
01				Weight(g)	398	Surface (shp)
Rev.	None	Date	Change	Kod IRV	0192061990000	Scale
						1:1
						Side 1 of 1

A3

92 061-00

3.2

	Approved	Date	Signature
Novaservis	Cejpek F.	7.7.2023	<i>Cejpek F.</i>
Supplier		23.07.27	<i>马守幸</i>



受控章

Polished, Chrome-plated (thickness Ni. 5 microns and Cr 0,15 microns)

08					Tolerances for linear and diameter dimensions unless indicated otherwise	novaservis
07					Included tolerances indicate ISO 2768-mS	
06					Tolerances for radius and chamfer unless indicated otherwise	Title Body
05					Tolerance indicator: ± ISO 2768-mS	
04					Issue	No. with 92 061-01
03					Issue 7.2.2023	
02					Material	A3
01					CC/ST3	
					Weight 42g	Scale
					Surface 140µm	1:1
					Kod 01 819364799000	1 of 1
Rev.	Issue	Issue	Change			